

Toureen Group 

PROJECT PROFILE

NORTH WEST  
CAMBRIDGE  
UNIVERSITY



## NORTH WEST CAMBRIDGE UNIVERSITY CAMPUS DEVELOPMENT

The North West Cambridge Development is a major expansion programme undertaken by the University of Cambridge which combines residential housing, academic and research facilities, public amenities and open green space. The overall development comprises 3,000 dwellings, 2,000 student bed spaces and 100,000m<sup>2</sup> of commercial space, as part of a 150-hectare expansion of the University, situated between Huntingdon Road, Madingley Road and the M11.

Toureen Contractors was awarded the contract for the enabling works, groundworks and the construction of thirteen reinforced concrete structures, totalling an initial £13m contract. The project was carried out over one continuous visit





PROJECT DURATION

DATE OF COMPLETION

CONTRACT VALUE

CLIENT

**52 WEEKS**

**AUG 2016**

**£14 MILLION**

**BAM**

and separated into two individual Lots.

Groundworks began in earnest across twelve acres of land on both Lots once the CFA piling works had progressed significantly to enable Toureen to commence construction of the foundations and underslab drainage and services.

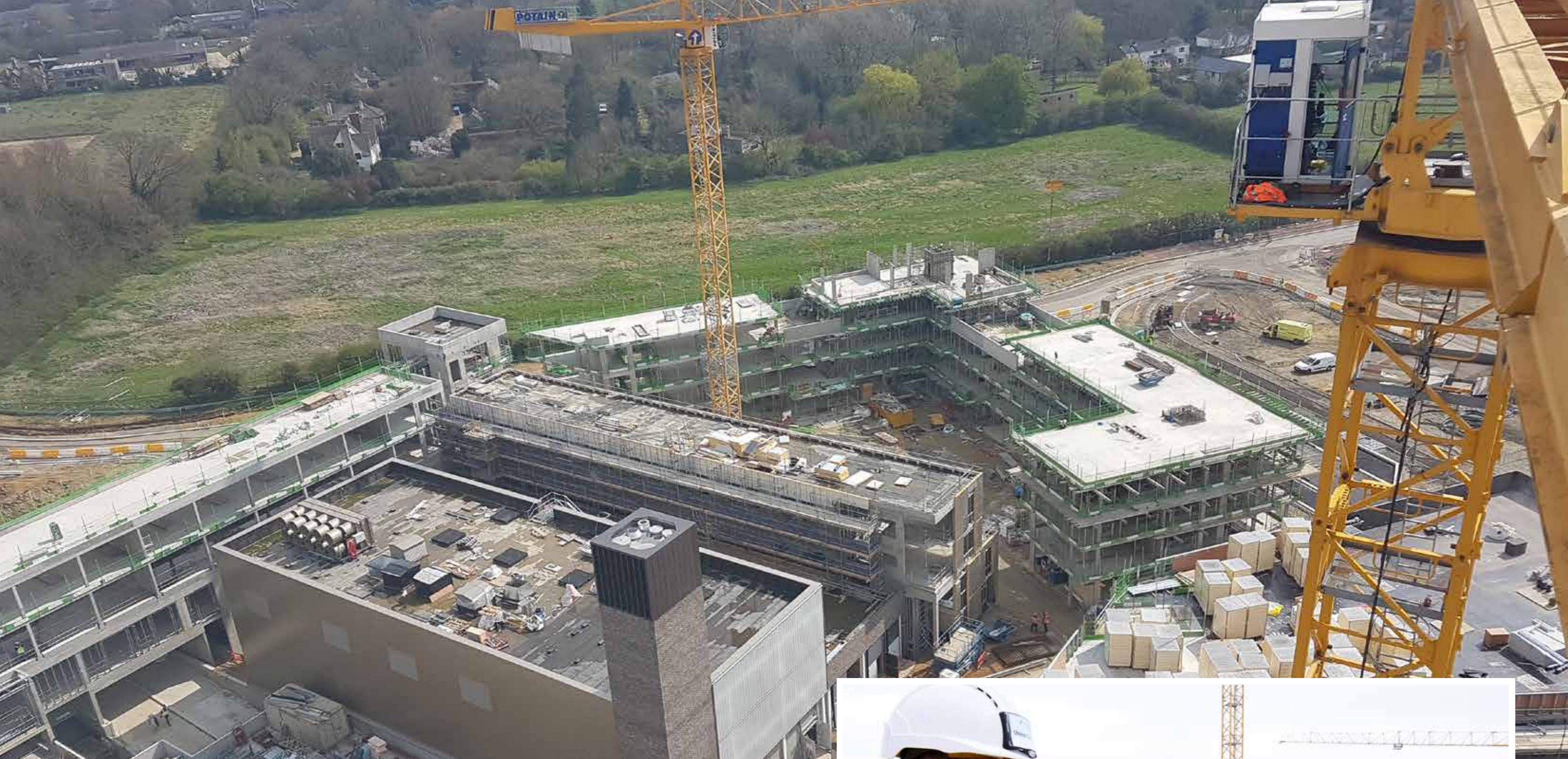
With multiple work faces opening up on a continuous basis, eleven RC Frames began concurrently, supported by 4 tower cranes and supplementary mobile crange. The RC frames comprising of over 31,000m<sup>2</sup> of soffits ranged from two to seven storey, all of which were unique in terms of geometry and complexity.

All of the residential blocks had exposed concrete soffits and exposed concrete cantilevered balconies. This totalled 13,000m<sup>2</sup> of high class finish work. Toureen used GGBS cement replacement to provide a lighter coloured concrete finish along with pre-determined patterned soffit plywood board arrangements "set out" on site by the Toureen site engineers to achieve the architects' desired finish.

Quality expectations were exceeded with these exposed soffits by adopting a very stringent on-site quality control sign-off procedure.

All temporary works designs for this project were undertaken and controlled by Toureen Group, ranging from sheet piling to a depth





of six metres to installing falsework to heights in excess of six metres. The complexity of the varying designs and ever changing logistical constraints has been met by a strong site-based management team. The project team effectively managed the logistical constraints and the project scope, whilst simultaneously managing the workforce in excess of 130 operatives on site.

The vision for the North West Cambridge Development was to create a new district within the City, which encapsulates an eclectic mix of both commercial and academic facilities together with urban residences – enhancing educational provision and quality of life for the University and, ultimately, the City.



# Toureen Group

Solving complex challenges since 1992



## **Toureen group**

Head Office  
25 Cecil Road  
Harrow  
HA3 5QY

**T:** 020 8424 7999

**E:** [info@toureengroup.co.uk](mailto:info@toureengroup.co.uk)

**[www.toureengroup.co.uk](http://www.toureengroup.co.uk)**

